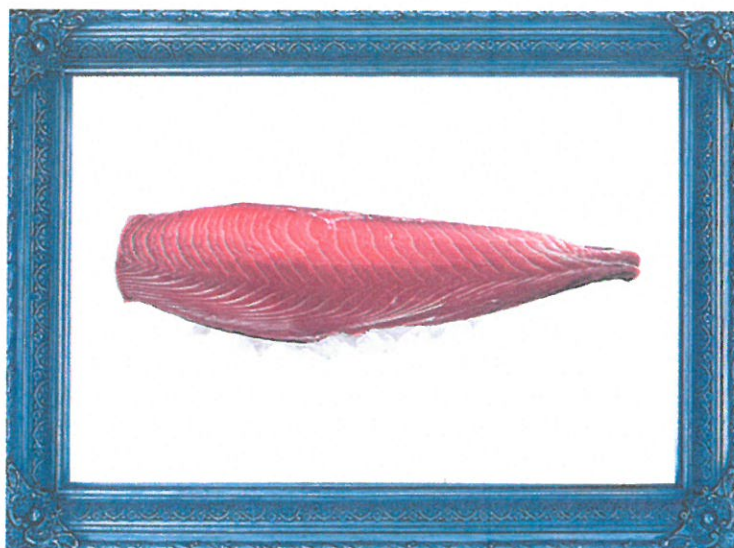


OCEAN & PIONEER
INTERNATIONAL CO., LTD



THE ART OF TUNA
ИСКУССТВО ПРОИЗВОДСТВА ТУНЦА





OCEAN & PIONEER INTERNATIONAL CO., LTD



PRODUCT RANGE

1. Tuna block

Tuna Sashimi: 16cm x 5cm x 2.5cm

Tuna Cubes: 9cm x 4.5cm x 4.5cm

2. Sashimi slice

Sashimi slice: 0.3cm x 5cm

3. Tuna steak (uncooked)

4. Tuna steak (cooked)

5. Tuna sushi

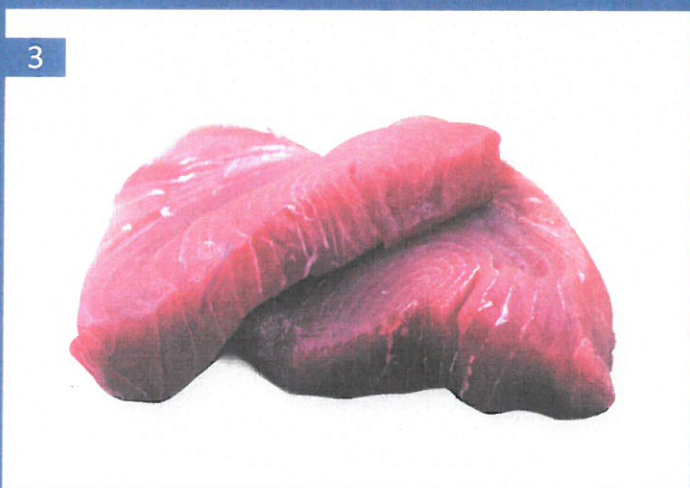
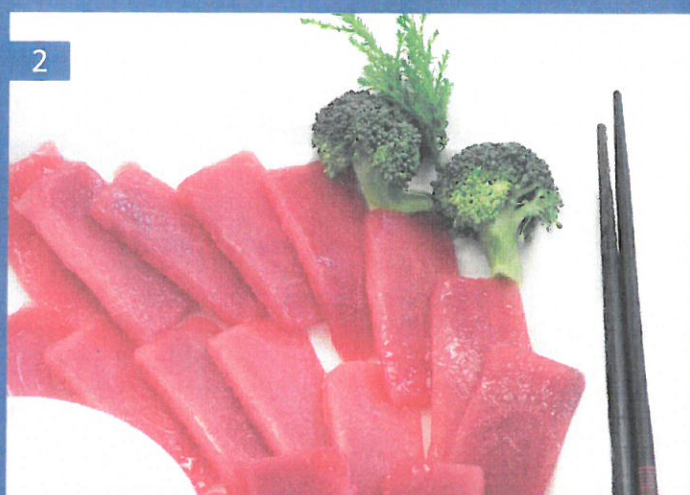
6. Tuna sushi

7. Tuna sticks (for rice toppings)

Size: 8cm x 1cm x 1cm

8. Tuna steak with vegetables

9. Tuna back loin



FOR MORE INFORMATION CONTACT MAIL OFFICE

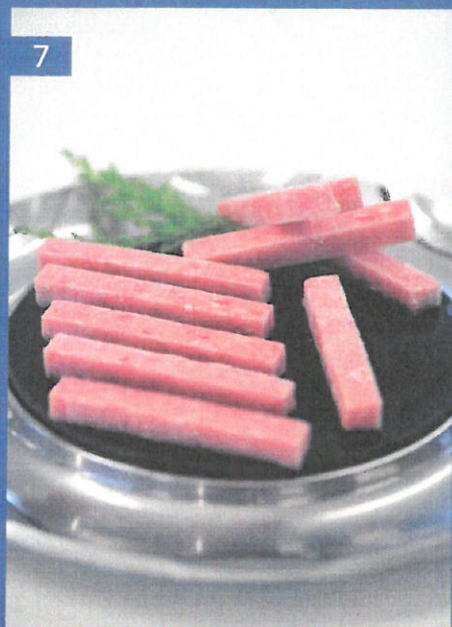
5



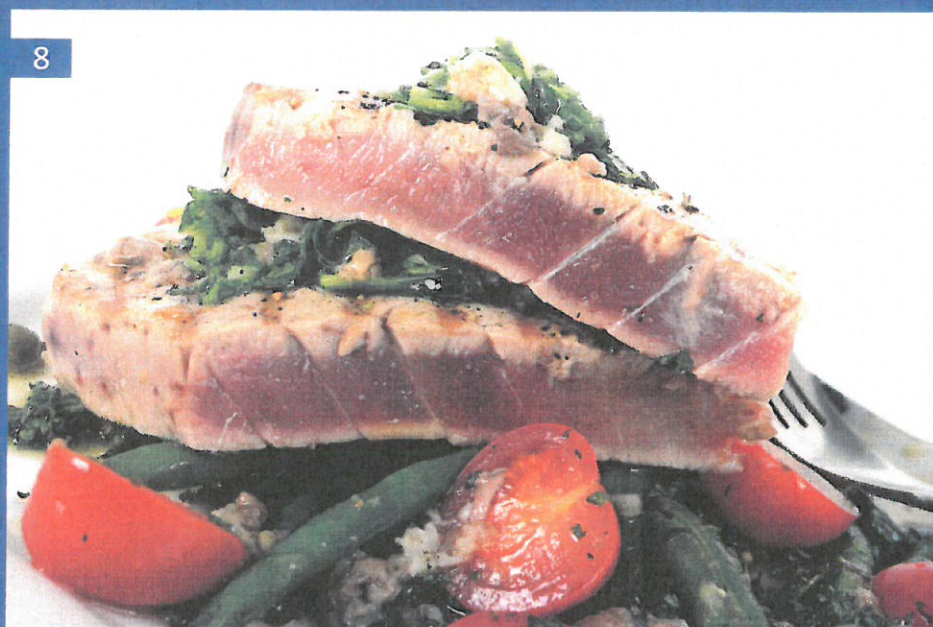
6



7



8



9



PRODUCTION OF PRODUCTS

Tuna, an oceanic migratory fish, mainly lives at 100~400 meters deep in the sea. Tuna can be classified into Blue-fin, Big-eye, Yellow-fin and Skipjack and is world-widely regarded as nutritious and healthy seafood on account of its low fat, low calories and being rich in first grade proteins, vitamins, amino-acids and etc.

Ranging from the Pacific Ocean to the Atlantic Ocean, KTI Group (Korea Trading & Industries Co., Ltd.) and its subsidiary company O&P (Ocean & Pioneer International Co., Ltd. which is specialized in tuna sales) are providing the world's best quality tuna to the canneries and traders. We promise to deliver the freshness of the sea to you.

KTI Group and O&P have a strategic alliance with Shin Hyun F&C, which is equipped with a new ultra-low temperature cold warehouse with temperature as low as -55°C and capacity of 1,400 tons. It is the first established ultra-low temperature cold warehouse in S. Korea and it also has ordinary temperature cold storage with capacity of 4,000 tons. KTI Group, O&P and Shin Hyun F&C cooperate with sales, storing and processing in terms of tuna products.

The cold storage is specialized in having an independent R&D center and advanced laboratory equipment, complete sets of tuna pipelining equipment that meet advanced standards in the world. There is a set of pipeline processing tuna with eradicating bacteria in tuna processing workplace, sealing machine, vacuum packaging machine, etc. The producing capacity each month reaches 600 tons.

Shin Hyun F&C acquired HACCP certificate, conformity facility registration and EU sanity certificate.







IN FEB OF 2015, WE, KTI GROUP PARTICIPATED IN PROD-EXPO HELD IN MOSCOW, RUSSIA. KTI GROUP (INCLUDING ITS SUBSIDIARY, O&P) IS EXPANDING ITS TUNA SALES TO RUSSIA, EUROPEAN COUNTRIES AND MIDDLE EAST.

KTI GROUP(KOREA TRADING & INDUSTRIES CO., LTD.) WAS FOUNDED IN 1987 AND IT HAS BEEN TRADING SEAFOOD FOR MORE THAN 20 YEARS AS AN EXCLUSIVE SELLER OF RUSSIAN FISHERIES COMPANIES. WE ALSO ARE NOW EXPANDING SALES PROMOTION IN THE WORLD-WIDE PLACES SUCH AS CHINA, JAPAN, MIDDLE EAST, AFRICA AND RUSSIA. SINCE THEN, KTI GROUP AND ITS SUBSIDIARY COMPANY, O&P ARE EXPORTING MORE THAN 70,000 TONS OF SEAFOOD AND 30,000 TONS OF FROZEN TUNA A YEAR. WITH OUR CHALLENGING SPIRIT AND THE FRESHNESS OF PRODUCTS, WE WILL BE LEADING COMPANY IN TUNA TRADE AND SEAFOOD BUSINESS.



**OCEAN & PIONEER
INTERNATIONAL CO., LTD**

CONTACT INFORMATION

601, KABEUL B/D,
350, HANGANGDAE-RO,
YONGSAN-GU, SEOUL,
SOUTH KOREA
TEL. + 82 51 241 2955
FAX. +82 51 231 5222
eastsea@onpint.co.kr